



VILLAGE HOMES

GREENBELT FLOOR PLANS



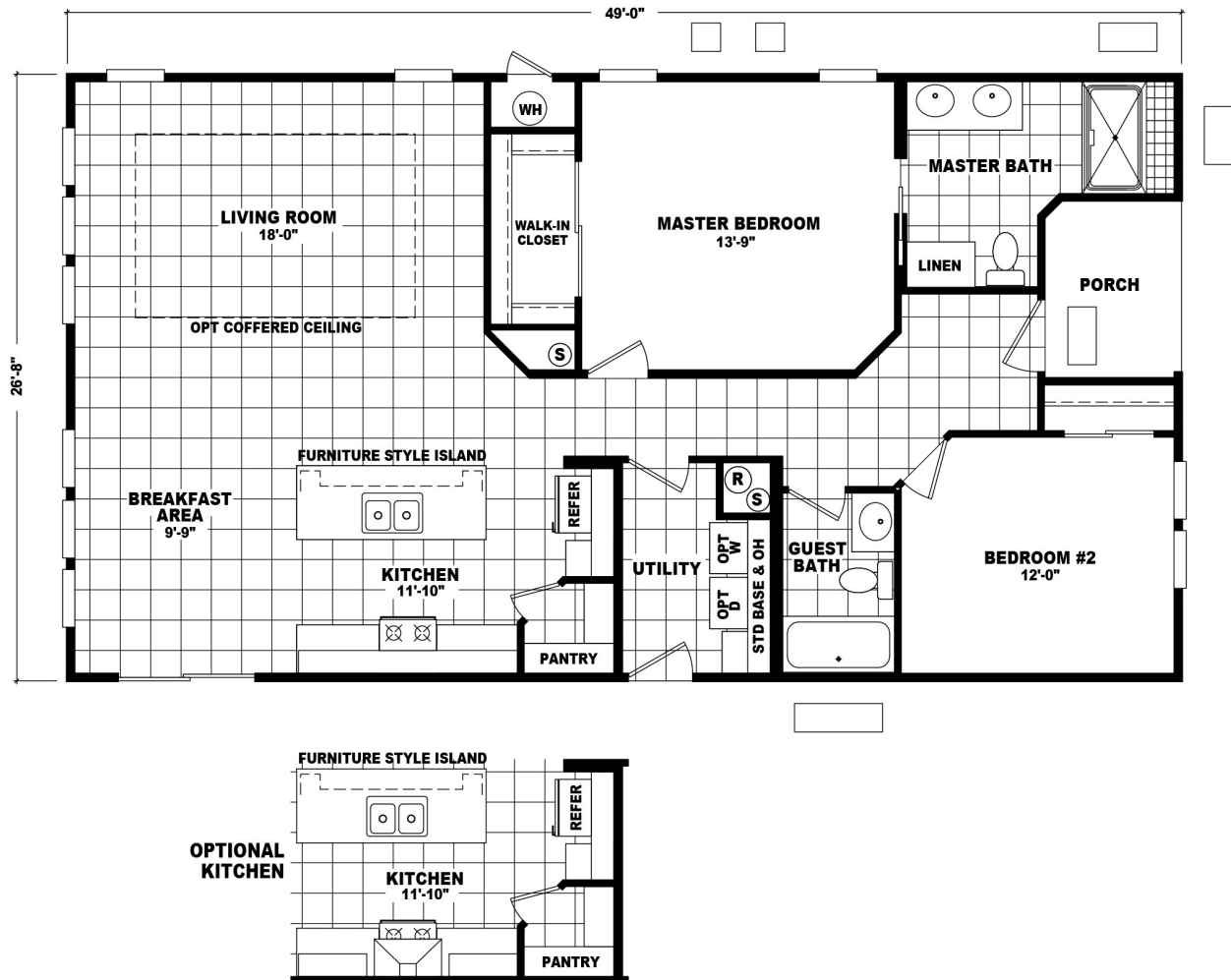
Dealer License #8544

Revised 11-28-18

MONACO GREENBELT

CAVCO HOME

Starting at \$144,900

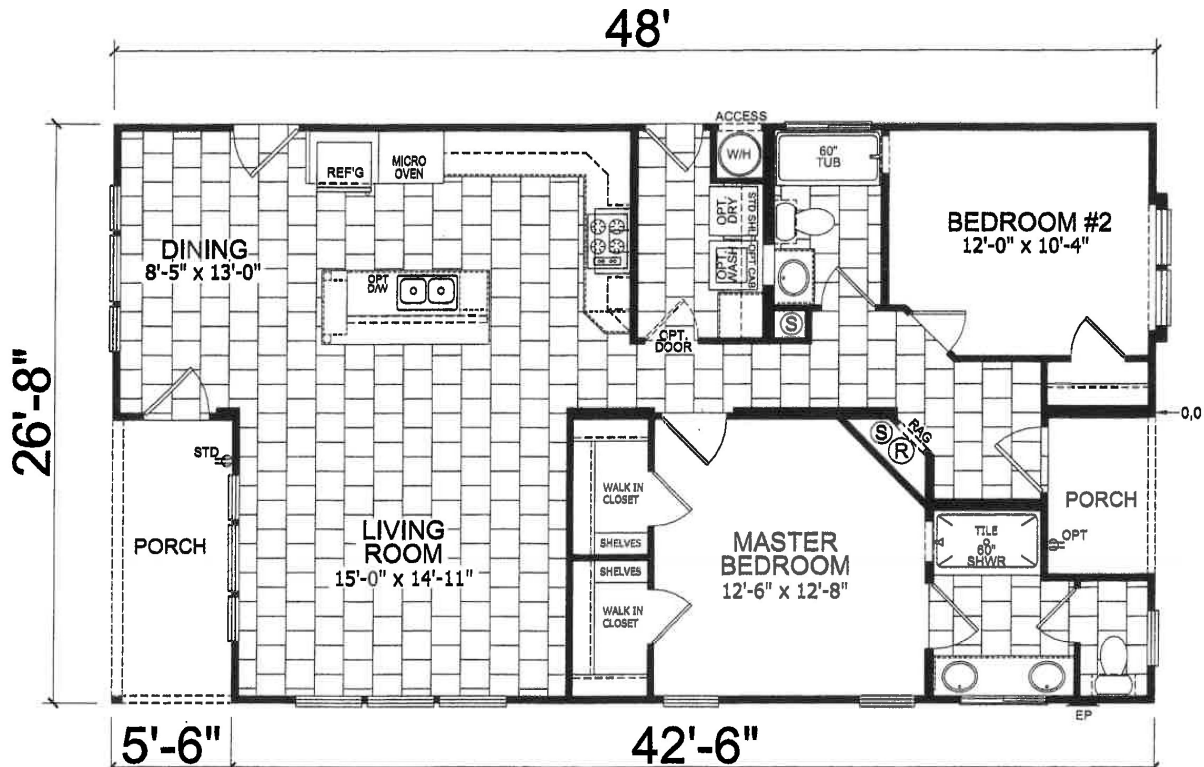


2 Bedroom 2 Bath 1306 sq ft

VERONA GREENBELT

CHAMPION HOME

Starting at \$144,900



2 Bedroom 2 Bath 1280 sq ft

WHAT'S INCLUDED

7-Year Home Warranty

Interior Features

- 9' flat ceilings
- Ceiling-fan ready
- 2" wood blinds with valance/cornice
- Wood window sills
- All lighting fixtures
- 2 solar tubes, choice of location

Exterior Features

- Full carport with awning / concrete drive
- Concrete front steps / border around home
- Architectural shingle roof
- 16" eaves and gutters
- Designer glass front door
- Nine lite half-glass rear door
- Two hose bibs
- Vinyl dual glaze windows

Construction

- R-33 roof insulation
- Air conditioner / heat pump
- Choice of exterior / interior paint colors
- 40-gallon electric water heater
- 200 amp total electric home
- Overhead duct system
- Whole house water shut-off valve
- 30 lb. roof load

Space Rent Incentive

Kitchen Features

- Whirlpool stainless steel appliances—refrigerator, dishwasher, self-clean oven and built-in microwave
- Recessed can lighting
- Formica countertop with tile backsplash
- Custom-designed cabinetry with wood doors
- Single-lever faucet with sprayer

Bathroom Features

- Large, tiled master bath shower
- Double-sink master vanity
- Comfort height vanities/toilets
- Fiberglass tub-shower in guest
- Formica countertops with tile backsplash

PALM CREEK
GOLF & RV RESORT

SALES OFFICE

Phone: (520) 371-5851

Toll Free: (877) 876-4400

npaupst@suncommunities.com

www.palmcreekgolf.com

Virtual Tours: under the Stay With Us tab



Nancy Paupst
Sales Manager