

VACATION COTTAGE OWNERSHIP

starting at
\$99,995

Enjoy the glorious views of Lake Erie.
• 2 1/2 miles of sandy beach

- exclusive lifestyle activities & events
- exclusive clubhouses & lounges
- includes 8 seasonal resort passes
- resort style living
- 560 acres of FUN



*Creating Memories
that last a Lifetime!*

8 Seasonal Resort Passes
(access to waterpark, beaches, Funplex, fitness centre, clubhouses, mini-golf)

Unlimited guest passes available for your friends and family to visit! Plus, anyone with a Seasonal Resort Pass can sign-in a guest for access to all facilities/amenities!

2 vehicle gate access passes

A jam-packed entertainment schedule for adults, family, and children of all ages

Discounts on resort amenities and activities including Boston Pizza

24-hour security 365 days/year

Resort maintenance, landscaping, lawn cutting & garbage pick-up

20% off cottage & camping vacations for your friends and family (Excludes holiday weekends and luxury accommodations)

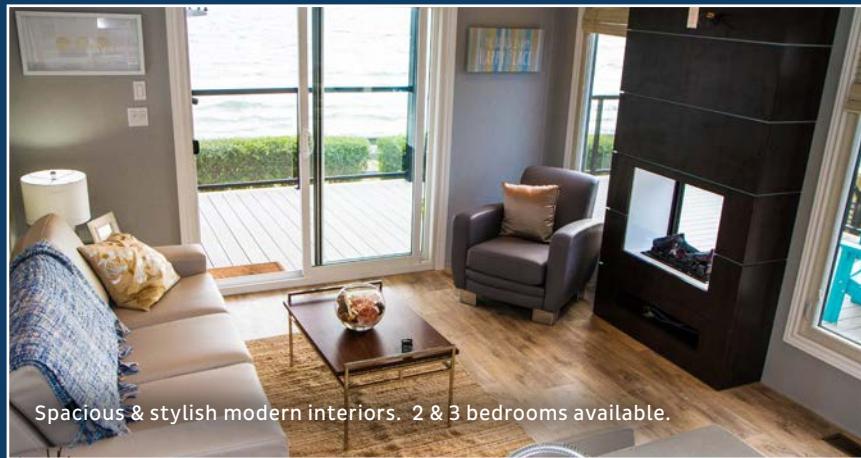
Picnic areas, walking trails, 2 dog parks, dog beach, and beach boardwalk

Golf Cart Sales & Rentals on-site

Grocery Store & Laundry facilities on-site

Free resort-wide Wi-Fi

BUT Wait....there's more, A LOT MORE...



Spacious & stylish modern interiors. 2 & 3 bedrooms available.



Endless beaches. Family FUN waterpark.



Exquisite modern exteriors, with break-taking views to match.

There's more at the shore!



Weekly Saturday Night Fireworks (peak season only)



Mac 3 Waterslides



Splashpad



3 pools, 2 hot tubs



Adult-only Events



Exclusive Family Events



Skatepark



Rock Climbing \$



Exclusive Fitness Centre



Paddleboard Rentals \$



Basketball Courts



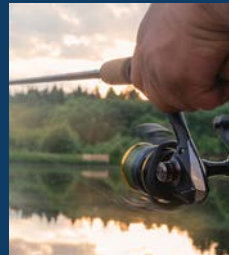
Weekly Live Bands



Archery \$



Paintball



Fishing & Boating



Axe Throwing \$



Pool-side Bar \$



Volleyball Courts



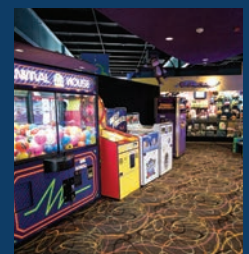
Bungee Trampoline \$



Paddleboat/Canoe/Water Tryke/Kayak Rentals \$



Ball Hockey Courts



Arcade & Funplex \$



Playgrounds



Tennis & Pickleball Courts



Aerial Challenge \$



Kids Crafts & Events



18-hole Mini-Golf



Boston Pizza \$

| | | | |
|---|---------|---------------------------------|----------|
| Parkland | \$8,520 | Wyldewood-Main & Surfloop-Front | \$11,380 |
| Quarry Meadows & Gulliver's | \$9,380 | Lakefront & Fishermans Hill | \$12,910 |
| Wyldewood-Loop, Quarryview Ledge & Sunset Hilltop | \$9,810 | Wyldewood - Front | \$15,130 |

Additional Fees

- Insurance - variable based on value of vacation cottage
- Water/Sewer - billed once per year \$600 yearly
- Propane - based on consumption; 100lb tanks = \$100 each
- Hydro - billed once per year; based on consumption. Average: \$500-600 yearly



Creating memories that last a lifetime.

Call today for more information or for a resort tour!

www.LiveSherkston.com
sales@sherkston.com | 1.844.894.7300